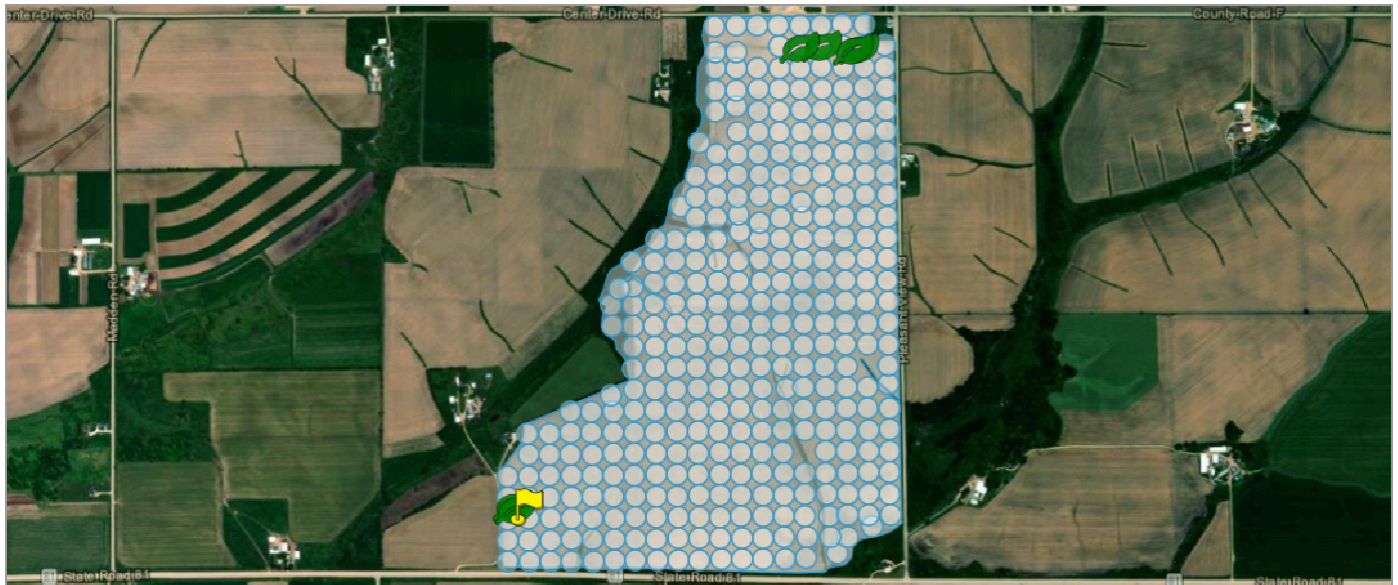


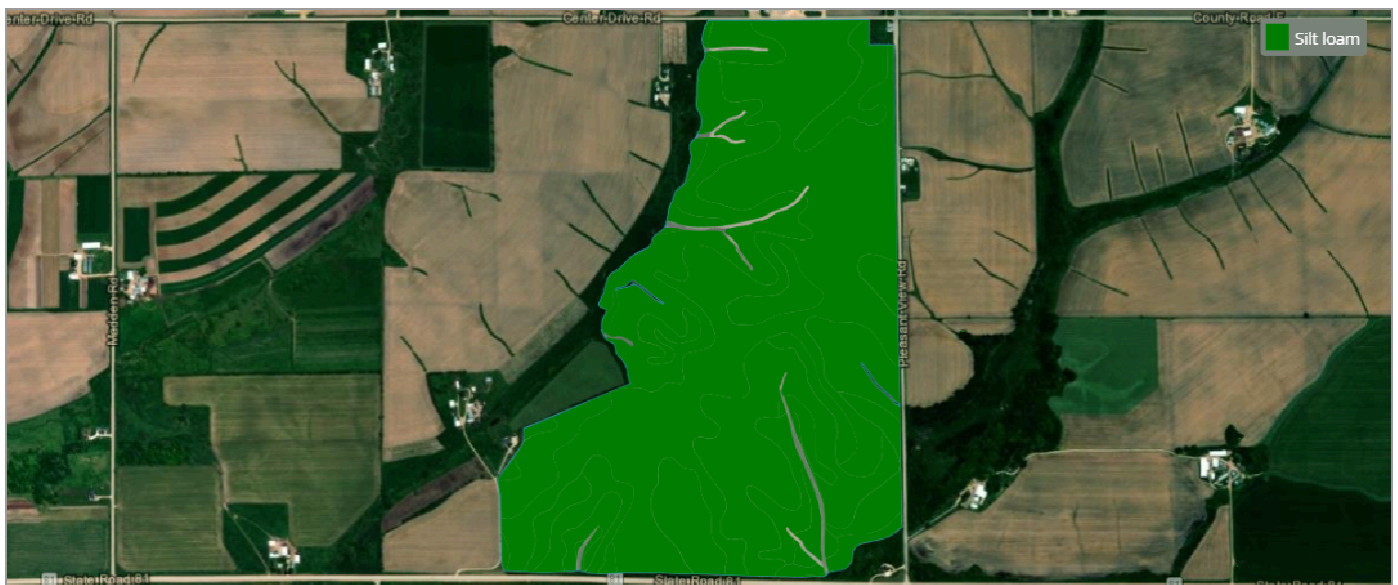
Product Trial Report

GROWER DETAILS	FIELD DETAILS	PLANTING/HARVEST DETAILS	Total Acre Final Report
Grower	Total Acres: 340.81	Crop: Corn	Report Date: 11/06/2025
City & State: Cuba City WI, WI	Soil Type: Please see Soil Type Map	Plant Date: 05/08/2025	Harvest Year: 2025
Zip Code: 53807	Title: Spot Tile	Row Spacing: 30"	Crop: Corn
	Irrigation: None	Planting Depth: 2.50	Trial Name: X246 V10 & R1 Trial
	Fall Tillage: No Till	Harvest Date: 10/12/2025	Trial Type: V10 & R1
	Spring Tillage: Strip Till	Hybrid: P10811AM	Product: SB Armor17-K
	Previous Crop: Soybean	Seed Company: Pioneer	
		Population: 35000	

Field Map

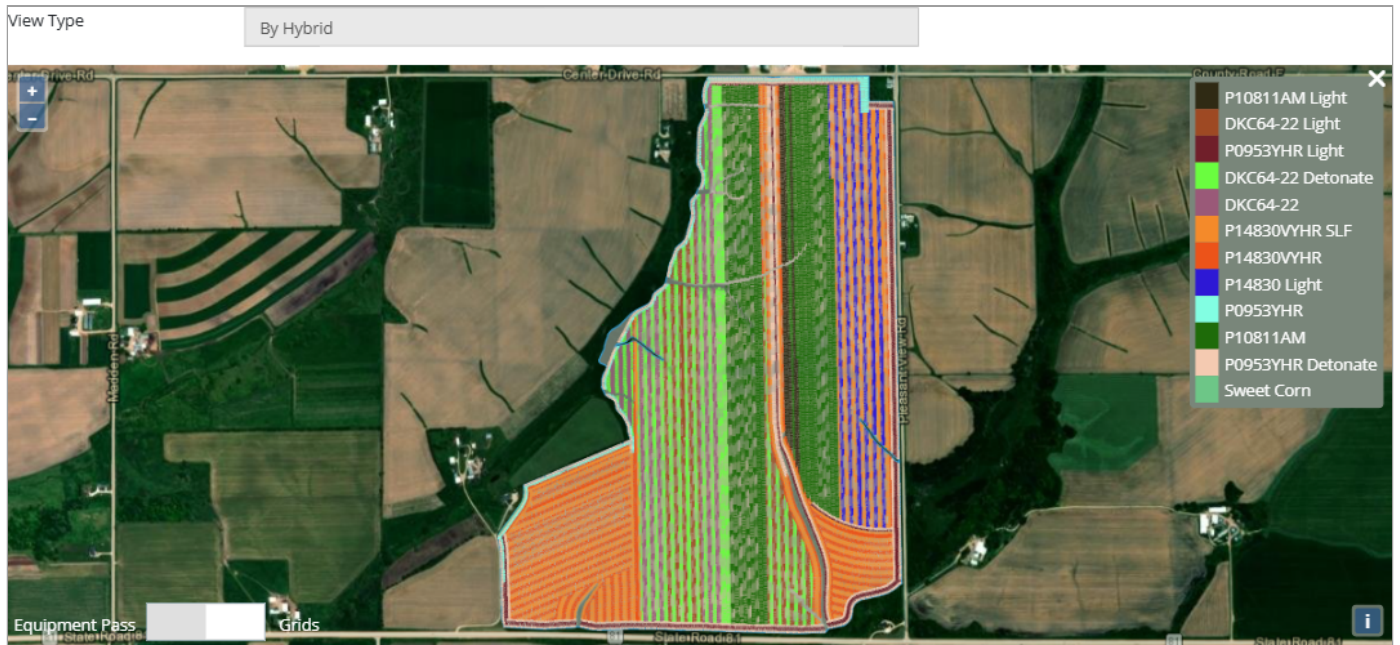


Soil Type



Product Trial Report

Planting Map



Trial Zones



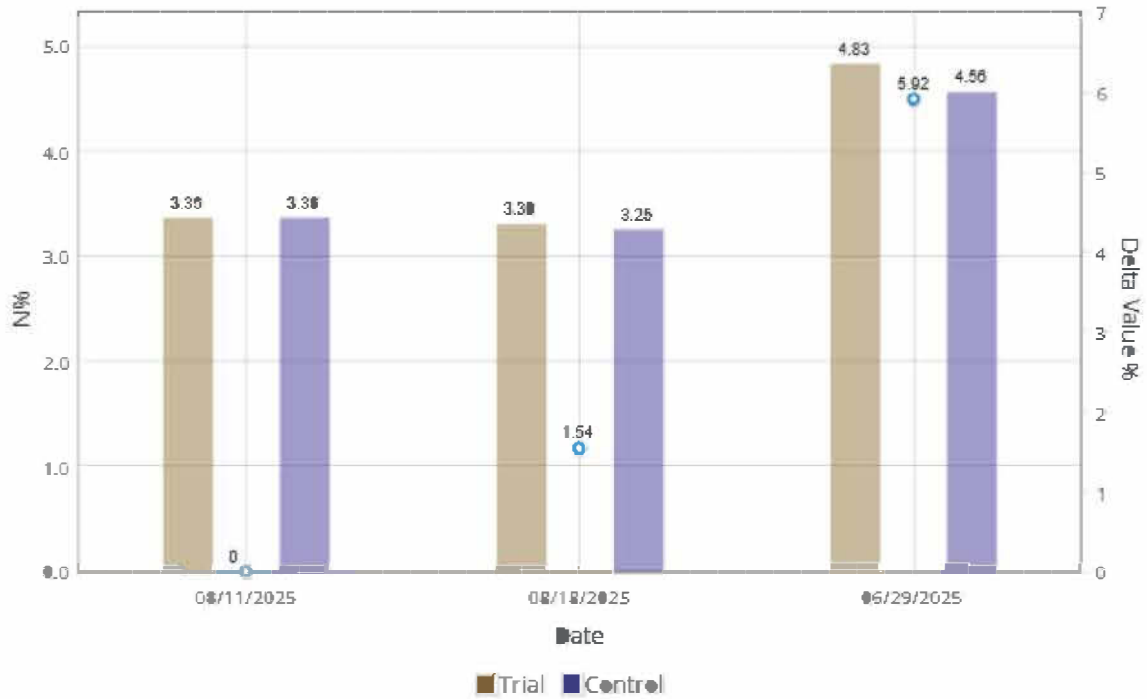
Product Trial Report

Tissue Results Data

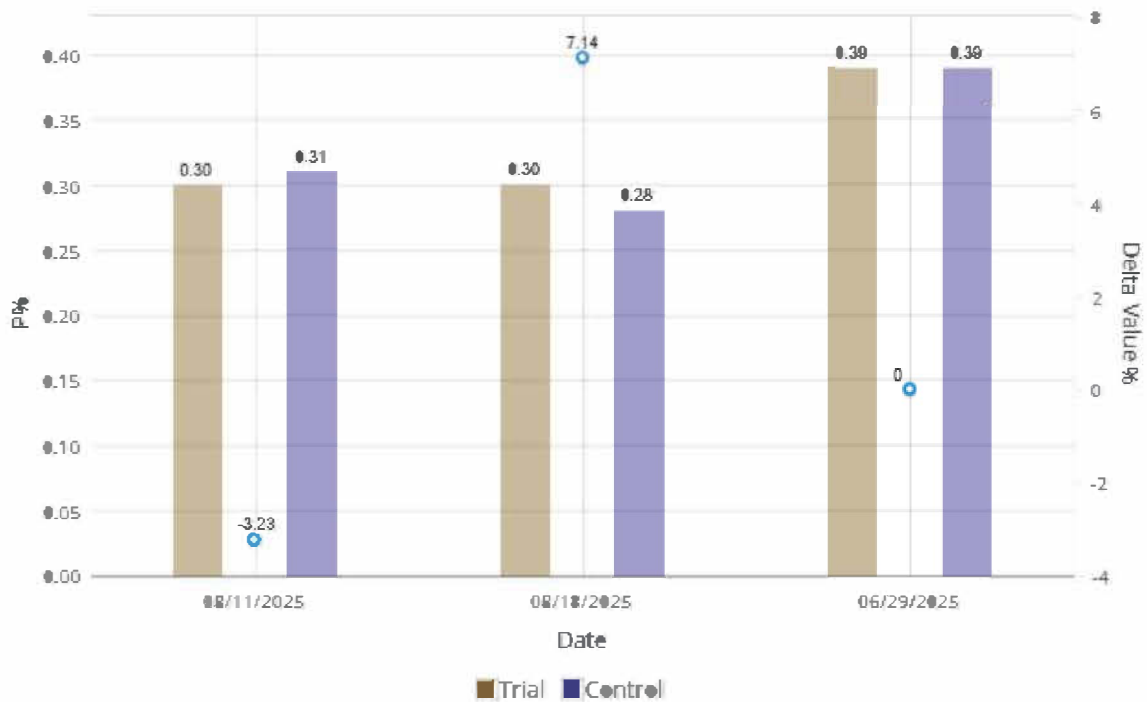
Date	GDU	Water	Tissue Site	Nitrogen	Phosphorus	Potassium	Magnesium	Calcium	Sulfur	Zinc	Manganese	Copper	Iron	Boron	Aluminum	Molybdenum	Sodium
06/29/2025	865	-	X246	4.83 %	0.39 %	2.39 %	0.35 %	0.44 %	0.35 %	30.52 ppm	42.64 ppm	17.19 ppm	127.05 ppm	19.24 ppm		1.22 ppm	0.49 ppm
			X246 Control	4.56 %	0.39 %	2.57 %	0.24 %	0.42 %	0.34 %	33.76 ppm	58.99 ppm	17.41 ppm	146.64 ppm	20.03 ppm		1.12 ppm	0.43 ppm
08/11/2025	1847	10.1 in	X246	3.36 %	0.3 %	2.64 %	0.32 %	0.48 %	0.23 %	25.5 ppm	32.26 ppm	10.65 ppm	195.84 ppm	9.48 ppm		1.29 ppm	0.2 ppm
			X246 Control	3.36 %	0.31 %	2.58 %	0.2 %	0.37 %	0.22 %	26.55 ppm	38.83 ppm	9.68 ppm	107.47 ppm	8.56 ppm		1.06 ppm	0.15 ppm
08/18/2025	2010	1.3 in	X246	3.3 %	0.3 %	2.52 %	0.29 %	0.51 %	0.24 %	97.17 ppm	33.78 ppm	11.41 ppm	129.94 ppm	9.48 ppm		1.14 ppm	0.18 ppm
			X246 Control	3.25 %	0.28 %	2.36 %	0.27 %	0.58 %	0.23 %	65.68 ppm	41.17 ppm	10.46 ppm	150.04 ppm	11.68 ppm		1.19 ppm	0.17 ppm

Product Trial Report

Tissue Sample Comparison - Nitrogen

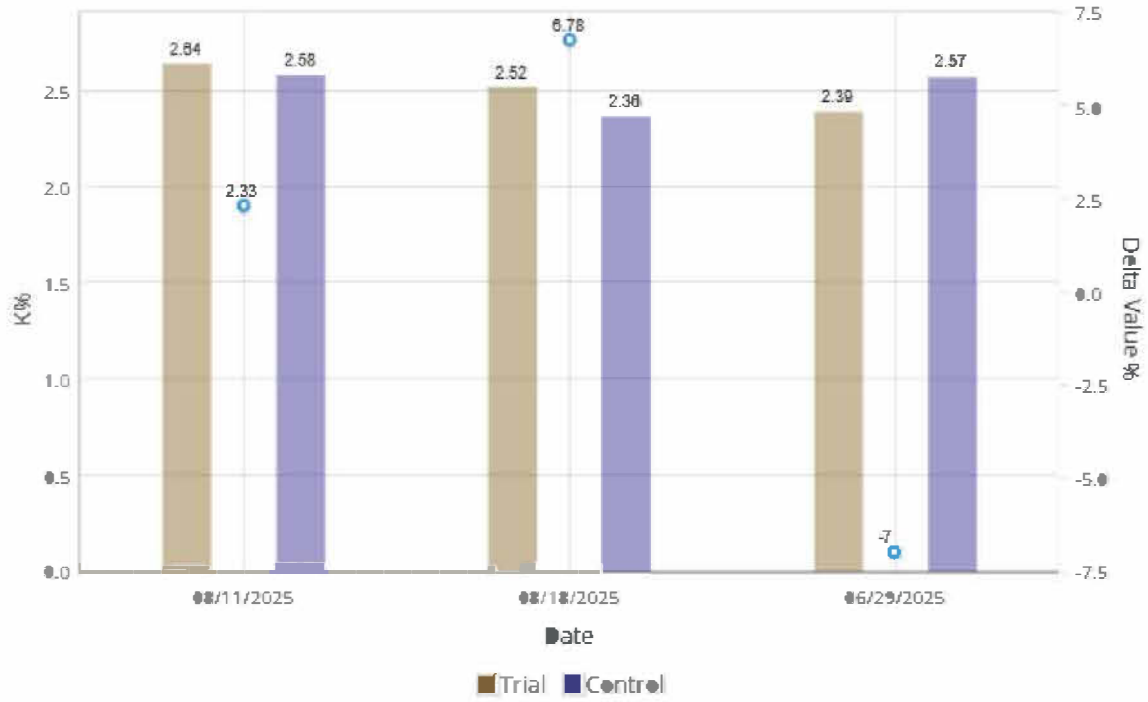


Tissue Sample Comparison - Phosphorus

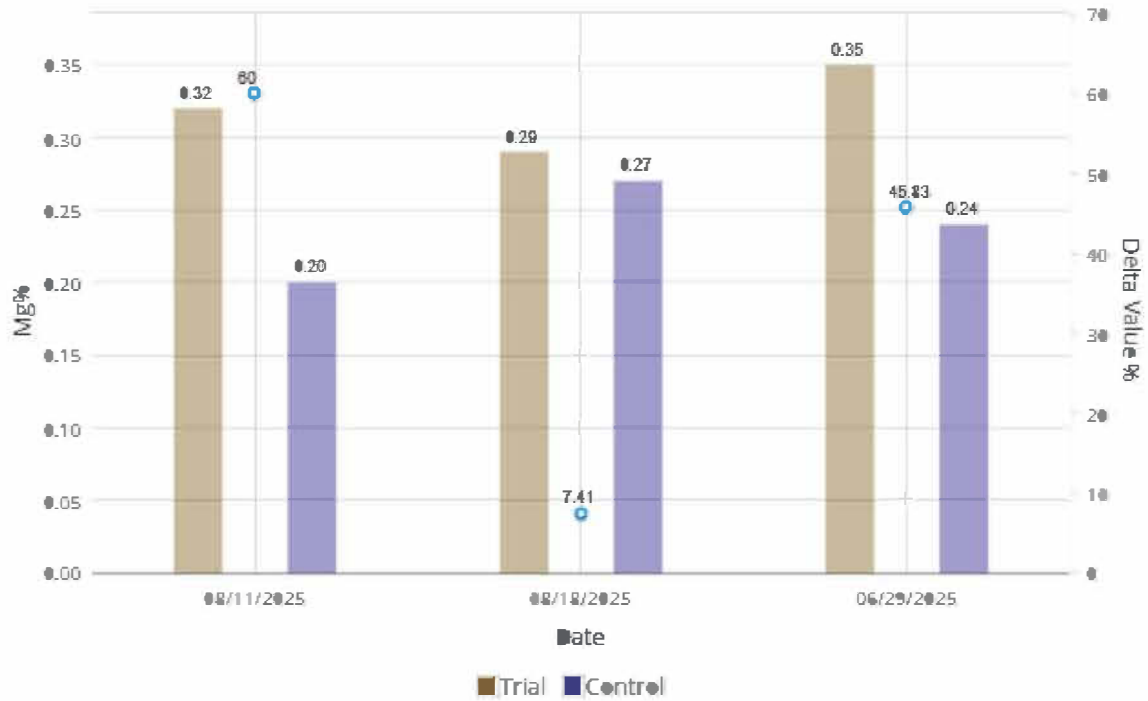


Product Trial Report

Tissue Sample Comparison - Potassium

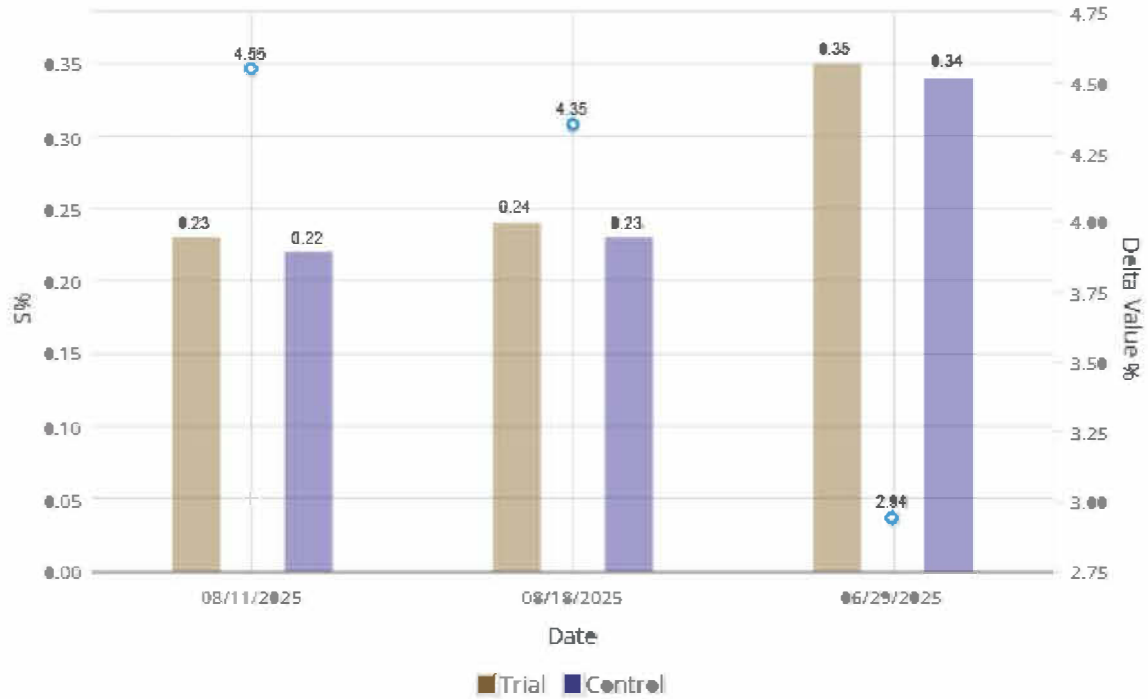


Tissue Sample Comparison - Magnesium

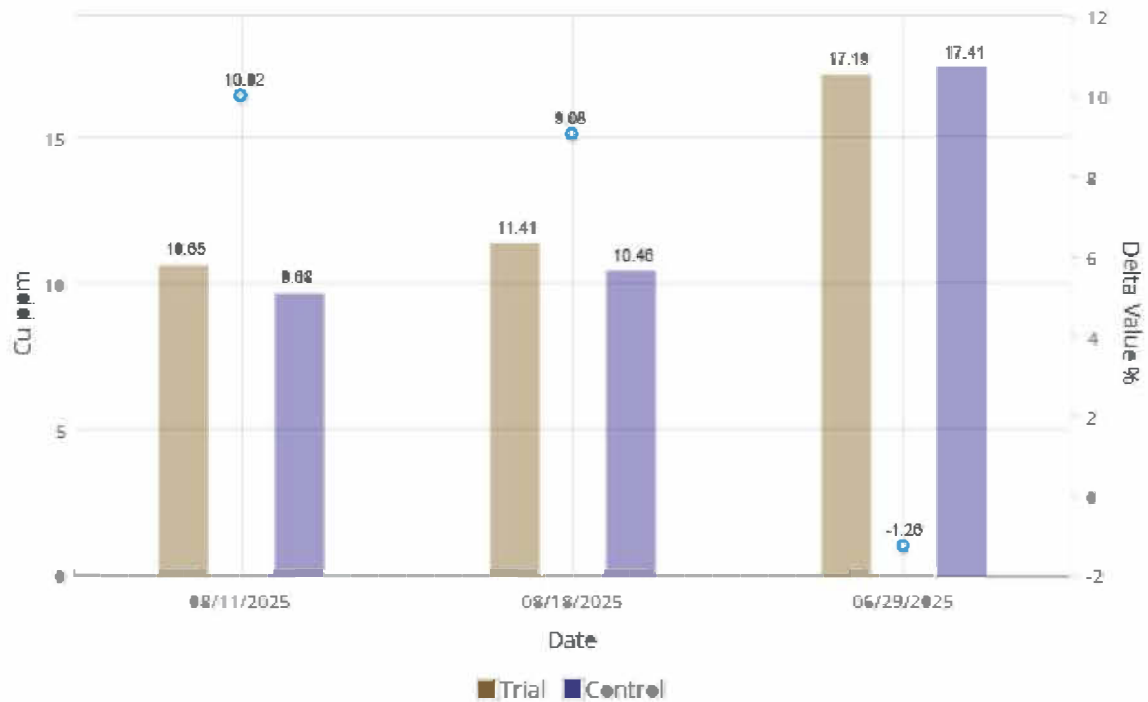


Product Trial Report

Tissue Sample Comparison - Sulfur

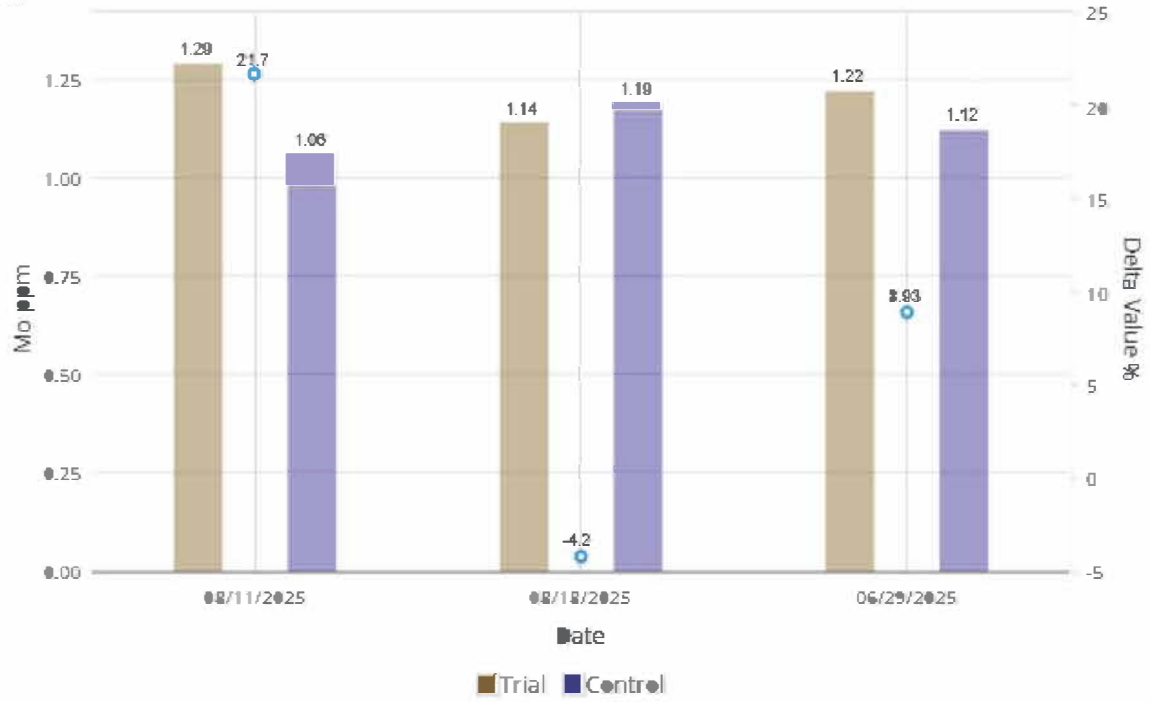


Tissue Sample Comparison - Copper



Product Trial Report

Tissue Sample Comparison - Molybdenum



Product Trial Report

Yield Results Data

High Level Yield Heat Map



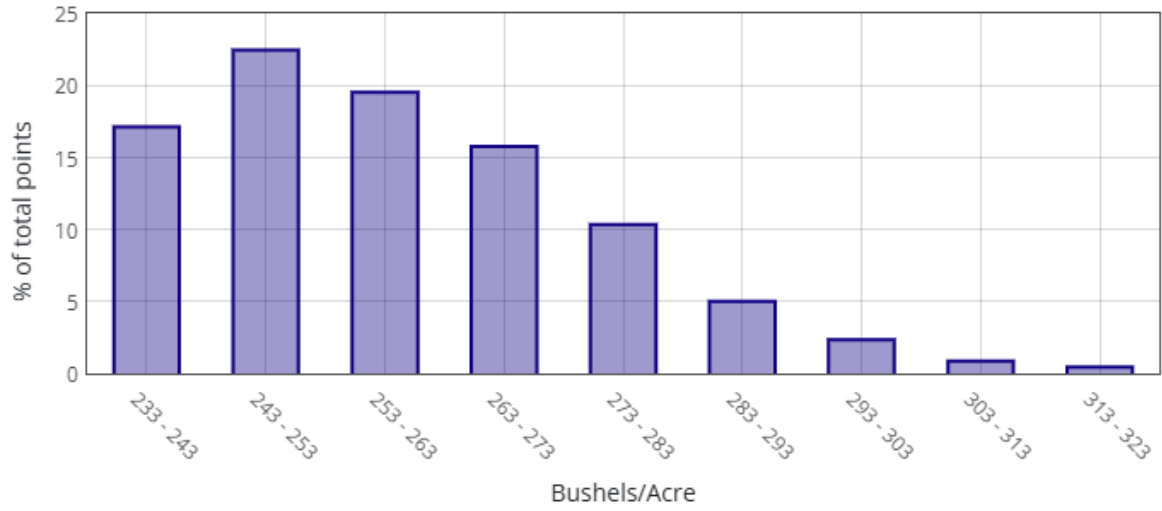
This data was filtered based on $-0.5 / +2$ St Dev

Yield Summary BPA	
<i>Location</i>	<i>Yield</i>
X246 Trial Zone	257.35
Control	252.81
Yield Response	4.54

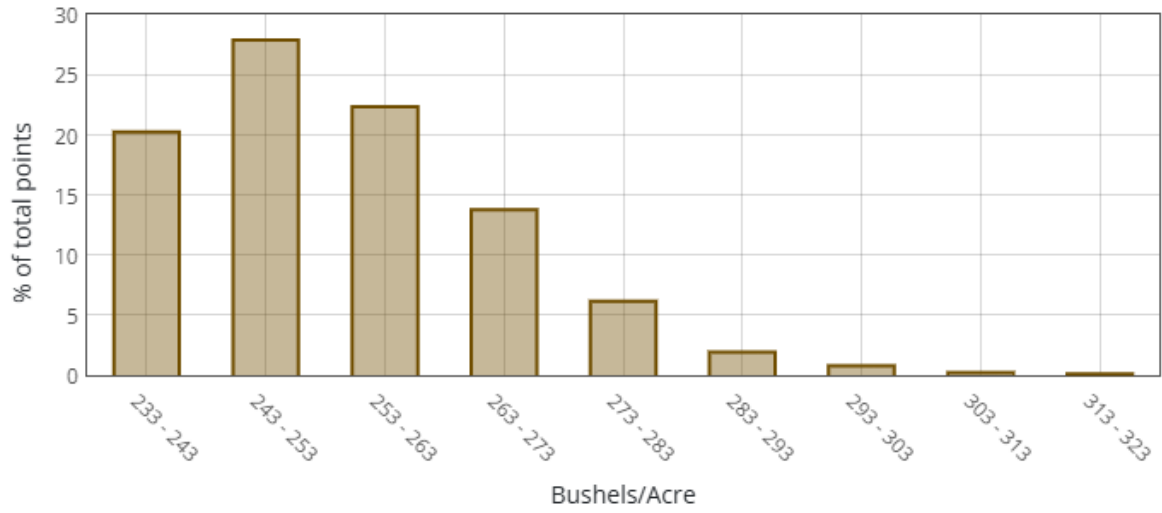
Yield Values	
●	235.3 - 243.4
●	243.4 - 254.9
●	254.9 - 265.6
●	265.6 - 280.9
●	280.9 - 322.6

Product Trial Report

X246 Trial Zone

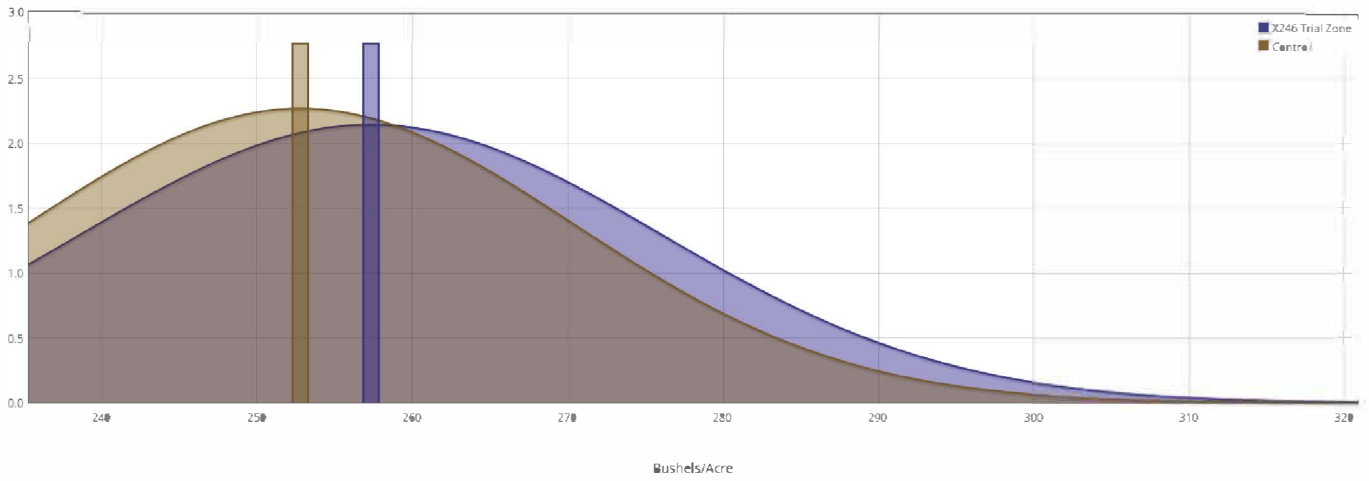


Control



Product Trial Report

Normal Curve Distribution



Product Trial Report

Product Trial Comments:

This trial had a 4.54 bushels/acre yield response using -0.5 / +2 St Dev measurement method to tighten up yield data points. Both applications were made with a drone. Zones were created from the zone spread maps. The control was the Grower Standard Practice of using Xyway at plant plus Veltyma at R3 with a 7 oz./acre rate.

The Tissue Sample charts are individual nutrients that had positive uptake trends during this study.

• Application Date and Details:

1st Application

- **Application Date:** 6/25/2025, 765 GDU's
- **Growth Stage:** V10
- **Application Method:** Foliar (Drone)
- **Product Application Rate/Acre:** X246 = 3 Quarts
- **Tank Mix Rate/Acre:** 3 Gallons

2nd Application

- **Application Date:** 8/13/2025, 1890 GDU's
- **Growth Stage:** R3
- **Application Method:** Foliar (Drone)
- **Product Application Rate/Acre:** X246 = 2 Quarts
- **Tank Mix Rate/Acre:** 3 Gallons

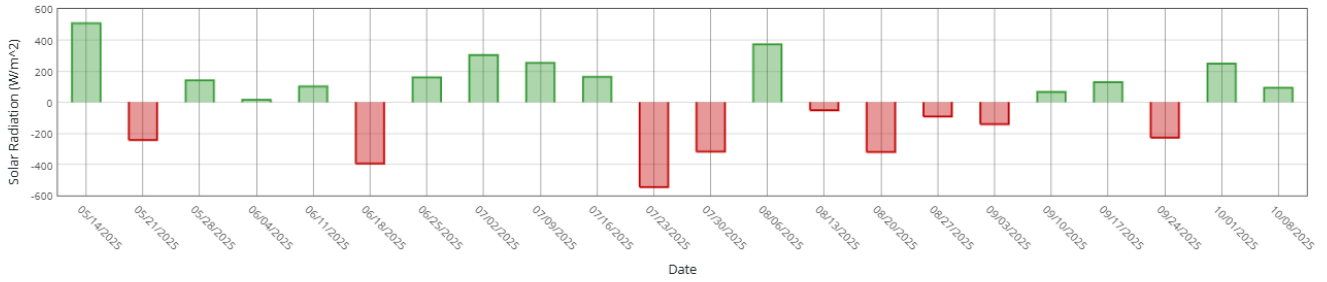
Product Trial Report

Trial Location Weather Data vs 5 Yr Avg

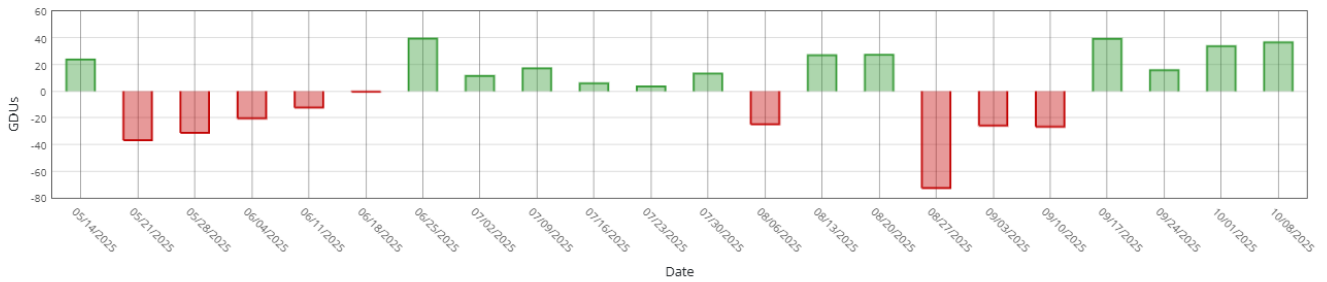
Historical Averages based on past years

Cumulative Week over Week

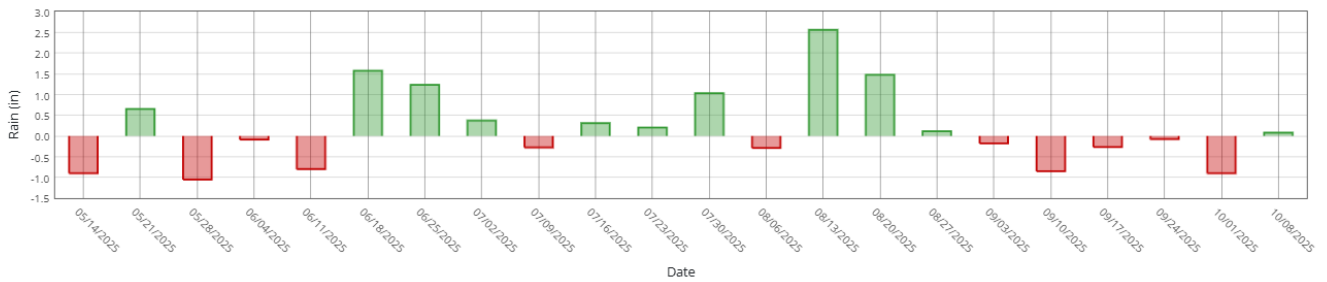
Sunlight



Heat (GDUs)



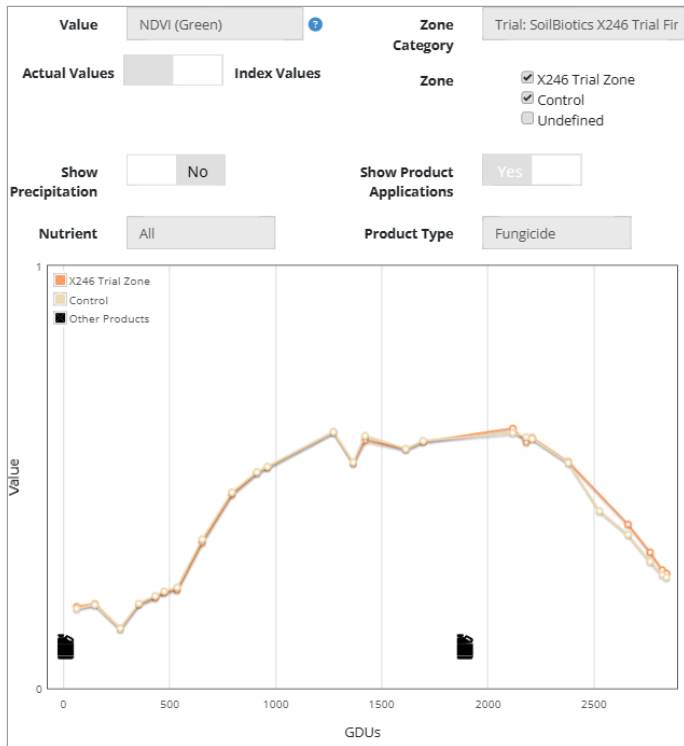
Rain



Product Trial Report

Additional References

Sentinel Imagery Indexes



This NDVI Green satellite imagery measures chlorophyll production and plant health markers. The application icons illustrate the Grower Standard applications of Xyway with the 2x2 and Veltyma at R3. Per this index, the X246 illustrated increased stay green capability post 2500 GDU's.

Satellite Imagery - 09/29/2025 - Trial: SoilBiotics X246 Trial Final - NDVI Green



This 9/29 image shows that the X246 location had a +6.59% advantage to the Control. This increased stay green capability helps to explain the excellent yield response for this study